

WISHLIST Hospital 'Snap' Tops

Requirements:

Size 2: 1m Fabric, 14 Snaps, Matching Thread

Size 4: 1.05m Fabric, 16 Snaps, Matching Thread

Size 6: 1.15m Fabric, 17 Snaps, Matching Thread

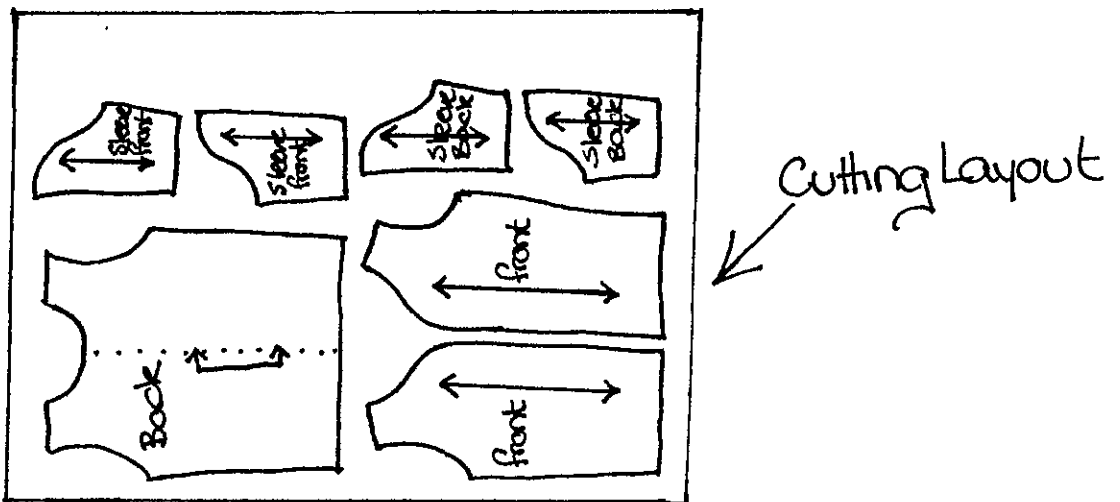
Size 8: 1.2m Fabric, 17 Snaps, Matching Thread

Size 10: 1.3m Fabric, 18 Snaps, Matching Thread

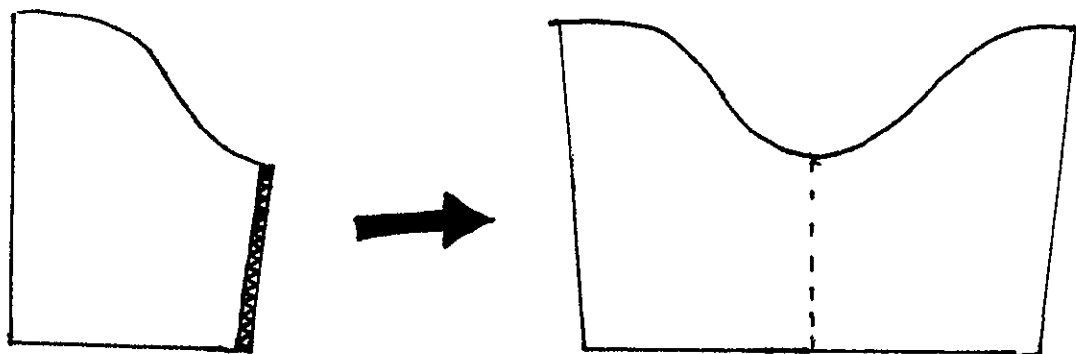
Size 12: 1.4m Fabric, 21 Snaps, Matching Thread

Size 14: 1.5m Fabric, 21 Snaps, Matching Thread

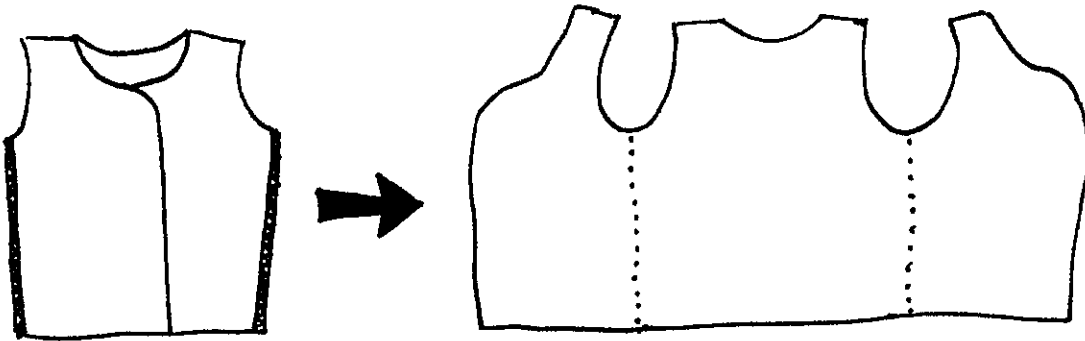
1.) Cut out pattern pieces being careful to line the grainline up parallel with the selvedge of the fabric. (2 x front pieces, 1 x back piece on fold, 2 x sleeve front, 2 x sleeve back



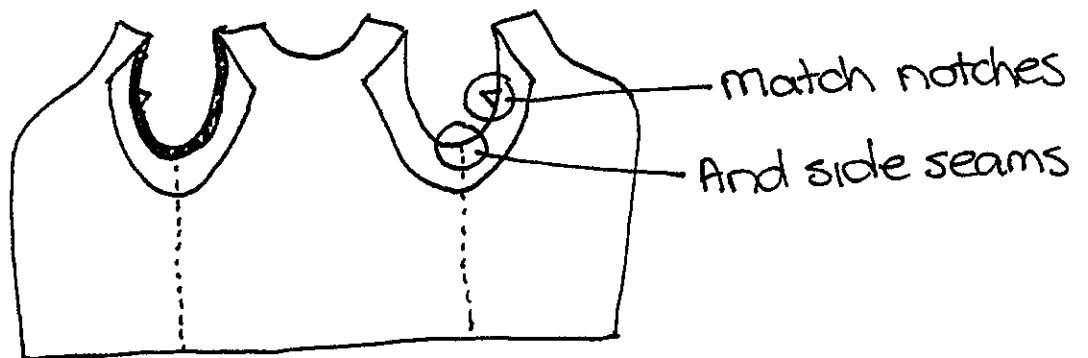
2.) Overlock lower edge of sleeve front to lower edge of sleeve back (15mm seam allowance)



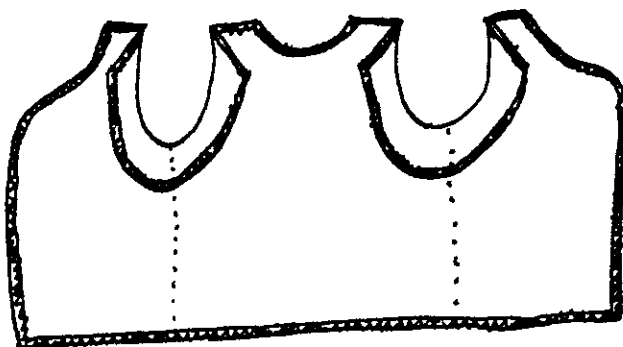
3.) Overlock side seams of front pieces to side seams of back piece. (15mm seam allowance)



4.) Overlock sleeves to bodice, matching up front notch and side seams. (15mm seam allowance) *At this point the top edge will still be open, too be closed later with snaps.

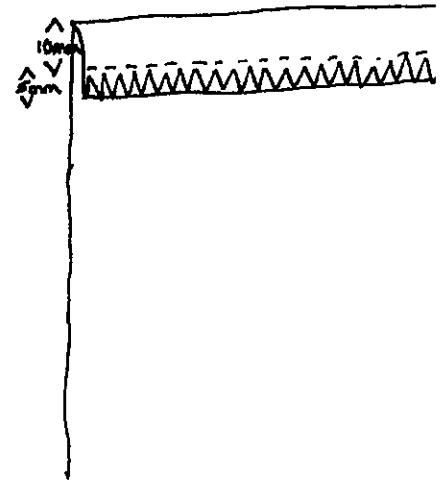
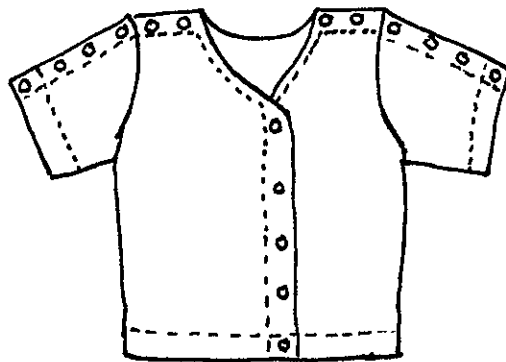


5.) Overlock entire outside to neaten raw edges and stop them from fraying.



6.) Turn under edges (15mm seam allowance stitched 10mm from folded edge on all sides except hem and sleeve cuff which has a 25mm seam allowance stitched 20mm from folded edge.)

7.) Fasten snaps on  marks following pocket guidelines.



***This pattern can also be sewn up without an overlocker, although better results will be achieved with one because it will stop the raw edges from fraying with the harsh washing that these garment will take. To sew up with a sewing machine on its own either neaten raw edges with a mock overlock stitch, which on you machine will look something like this



or with a zig zag stitch. Or use the following instructions instead of step 5.

Fold under 5mm, press

Fold under another 10mm, press (20mm for hem)

Stitch on wrong side of fabric as close as you can to the first folded edge.

At the corners you'll need to mitre them by turning a triangle under.

